


THE
SAFE AIR
ZONE 

AIRBOXTM
CLEAN AIR. PURE & SIMPLE.

TSAZ Office Deck

82%

**of offices currently do not meet the
standards for indoor air quality**



Even life after COVID...

...air pollution is one of the leading causes of death worldwide

Cardiovascular
Disease

Cancer

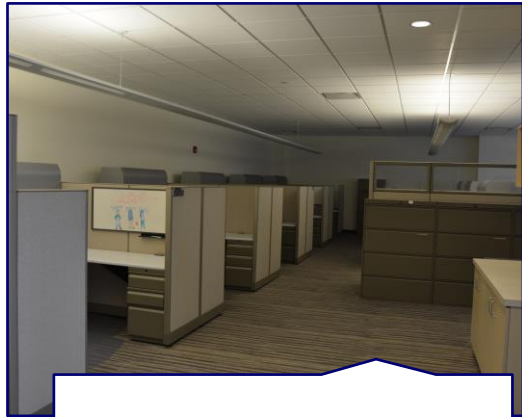
Asthma



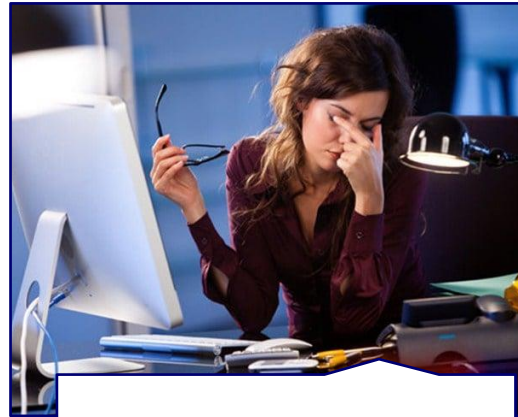
-43% of Global Deaths, 75% of Deaths Over 60
-Air pollution exceeds malaria by a factor of 19



Poor indoor air quality has been proven to link



Call Outs



Low Productivity



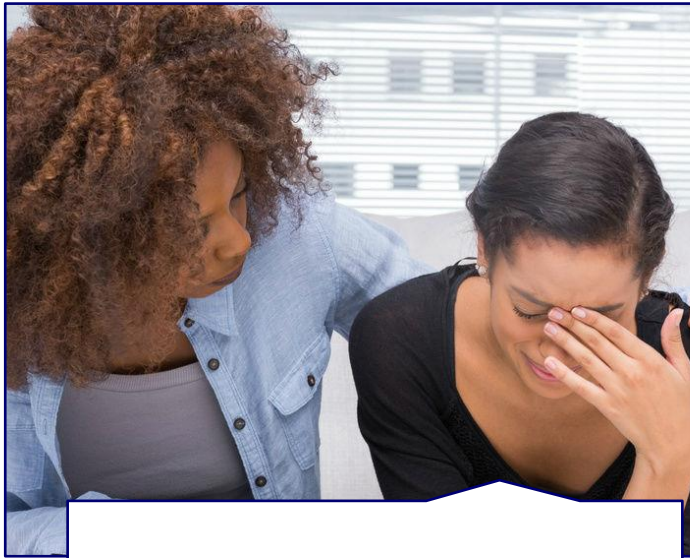
Airborne Transmission of Infectious Disease



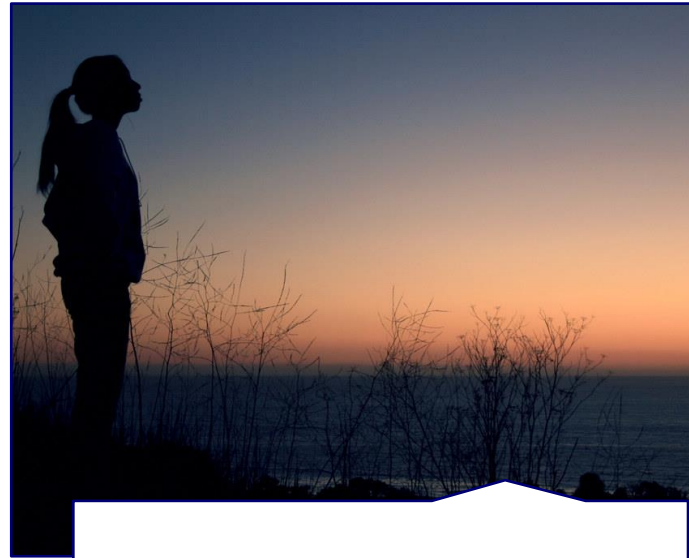
Asthma



Getting our workforce back in the office is critical



Mental Health

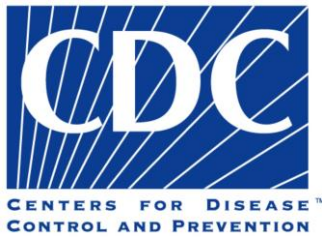


Social skills



Nutrition





Scientific Brief: SARS-CoV-2 and Potential Airborne Transmission

Updated Oct. 5, 2020

Languages ▾ Print



The principal mode by which people are infected with SARS-CoV-2 (the virus that causes COVID-19) is through exposure to respiratory droplets carrying infectious virus.

Respiratory droplets are produced during exhalation (e.g., breathing, speaking, singing, coughing, sneezing) and span a wide spectrum of sizes that may be divided into two basic categories based on how long they can remain suspended in the air:

- **Larger droplets** some of which are visible and that fall out of the air rapidly within seconds to minutes while close to the source.
- **Smaller droplets and particles** (formed when small droplets dry very quickly in the airstream) that can remain suspended for many minutes to hours and travel far from the source on air currents.



Once respiratory droplets are exhaled and as they move outward from the source, their concentration decreases through fallout from the air (largest droplets first, smaller later) combined with dilution of the remaining smaller droplets and particles into the growing volume of air they encounter.



DOL and CDC has *recommended* engineered controls for assist with the reopening and reduce transmission

- Engineering controls involve isolating employees from work-related hazards. In workplaces where they are appropriate, these types of controls reduce exposure to hazards without relying on worker behavior and can be the most cost-effective solution to implement.



Engineering Controls for SARS-CoV-2



Installing high-efficiency air filters with Certified HEPA to remove 99.99% of all particles

Increasing ventilation rates in the work environment

Installing physical barriers, such as clear plastic sneeze guards

Installing a drive-through window for customers

Specialized negative pressure ventilation in some settings, such as for aerosol generating procedures



LIES and CORRUPTION in the air purifier industry



Most portable air purifiers do not use Certified HEPA and do not remove COVID-19 from the air



Most portable air purifiers do not test upon manufacturing of their filters for CDC guidelines



Most portable air purifiers do not hold up to their company's marketing statements on air purification



Potentially just mixing room air making the situation more dangerous



AIRBOX Peak Series S



AIRBOX Apex



Certified HEPA Filtration (see next page)

Ease of use and simple to install, Plugs into any 120v outlet

Same technology placed in laboratories, infectious disease control rooms and manufacturing of pharmaceuticals

Every Certified HEPA filter is individually tested in accordance to CDC and OSHA (see next page)

Utilizes MICROBAN[®] technology in the materials of AIRBOX. Creating an antimicrobial environment

Built by American Craftsmen (100% made in the U.S.A)

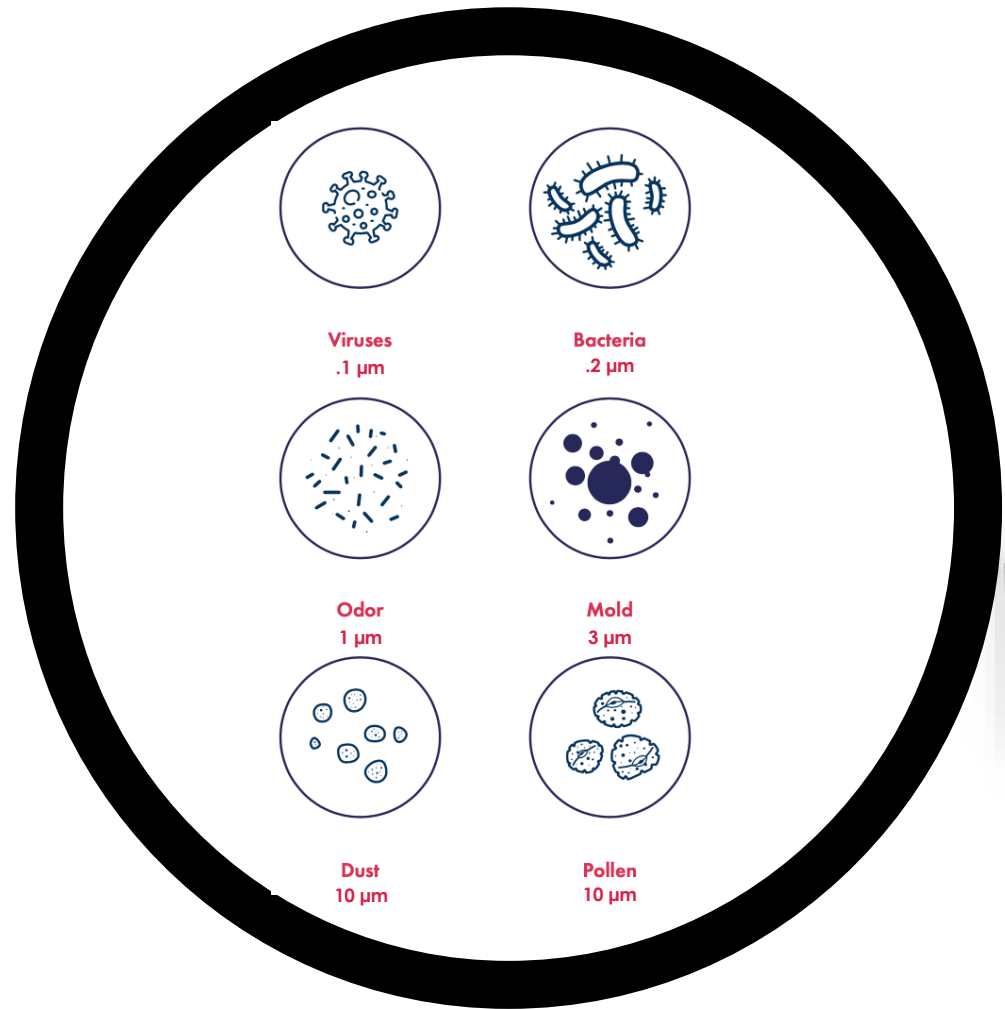
Removed 99.99% of particles of all sizes

Energy efficient fan motors

Meets the CDC and OSHA guidelines for engineered controls

Why AIRBOX








**CERTIFIED
HEPA Filter**

Filters **99.99%** of all particle sizes
Including **Sars-Cov-2**



- ➔ 
Registered Facility
- ➔ 
Log 4 Purification
- ➔ 
Individually Tested

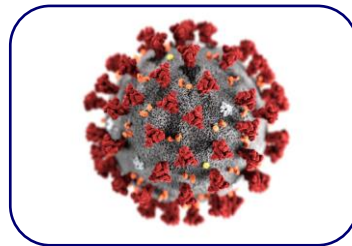
3rd party testing of the AIRBOX unit with **Sars-Cov-2 (COVID-19)**



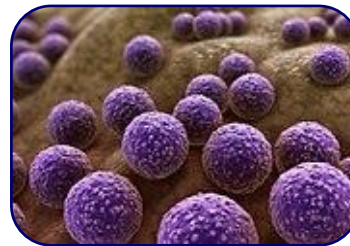
Scientific Lab Testing Results

- ✓ Tested at full scale in a 1000 cubic foot room
- ✓ Removed 99.99% in 25 minutes
- ✓ Removed 99.57% of the virus in 10 minutes
- ✓ Removed 99.9999% in 40 minutes

Eliminates 99.99% of all particle sizes



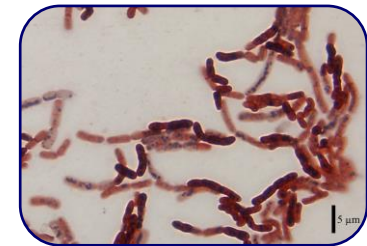
SARS-CoV-2
COVID-19



Staphylococcus
Aureus



E. Coli



B. Subtilis



The Certification



Study Update

Sponsor: Meredith Teague, Airbox

Study ID: NG 16435

Date: 04 NOV 2020



CERTIFICATE OF ACCREDITATION

ANSI National Accreditation Board

11617 Coldwater Road, Fort Wayne, IN 46845 USA

This is to certify that

Microchem Laboratory, LLC

1304 W. Industrial Blvd.
Round Rock, TX 78681

has been assessed by ANAB and meets the requirements of international standard

ISO/IEC 17025:2017

while demonstrating technical competence in the field of

TESTING

Refer to the accompanying Scope of Accreditation for information regarding the types of activities to which this accreditation applies

L2450

Certificate Number

ANAB Approval

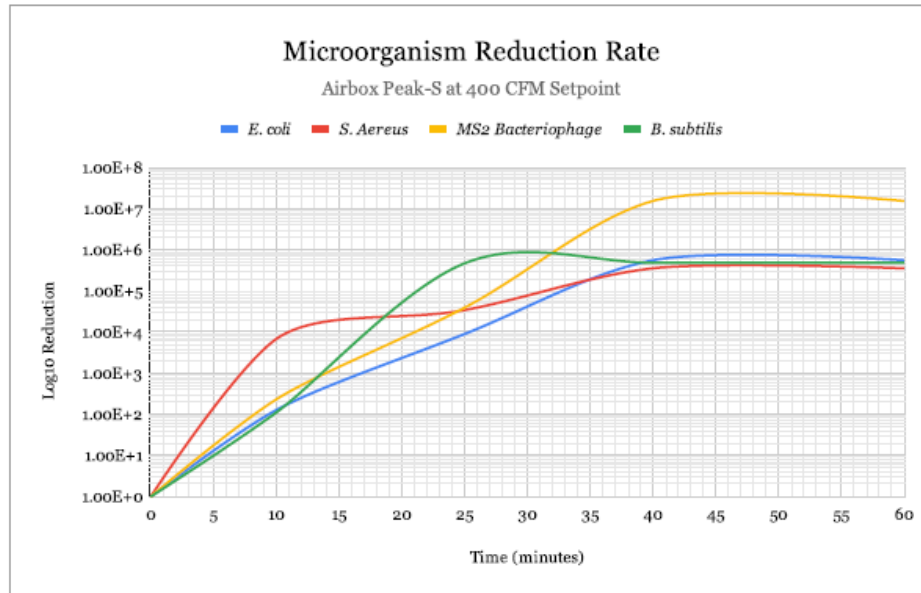
Certificate Valid Through: 04/20/2021
Version No. 003 Issued: 03/25/2019



Dimensions



The Tests



Microorganism	Initial Concentration (CFU/cu m.)
<i>E. coli</i>	4.84E+07
<i>S. Aureus</i>	3.08E+07
<i>MS2 Bacteriophage</i>	1.34E+09
<i>B. subtilis</i>	4.22E+07

AIRBOX BUSINESS CONFIDENTIAL

The reproduction or distribution of this Document is NOT permitted without the expressed written permission of AirBox Corp.

Test Microorganism	Test Device	Treatment Time Point	Replicate	CFU/ml	Average CFU/ml	Volume Recovered from Biosamplers (ml)	CFU/m ³	Average CFU/m ³	Percent Reduction Compared to Time Zero	Log ₁₀ Reduction Compared to Time Zero ¹
<i>E. coli</i> ATCC 11775	Airbox Peak-S	N/A	Inoculum 1	2.40E+08	2.40E+08	N/A	N/A	N/A	N/A	N/A
		Time Zero	Replicate 1	2.75E+05	2.75E+05	22	4.84E+07	4.84E+07	N/A	N/A
		10 Minute	Replicate 1	2.10E+03	2.10E+03	22.6	3.80E+05	3.80E+05	99.22%	2.11
		25 Minute	Replicate 1	3.00E+01	3.00E+01	22.4	5.38E+03	5.38E+03	99.99%	3.95
		40 Minute	Replicate 1	5.00E-01	5.00E-01	21.6	8.64E+01	8.64E+01	99.9998%	5.75
		60 Minute	Replicate 1	5.00E-01	5.00E-01	21.6	8.64E+01	8.64E+01	99.9998%	5.75

¹The Log reductions for the Test Runs are adjusted to account for natural die-off and gravitational settling observed in the Control Run.

Test Microorganism	Test Device	Treatment Time Point	Replicate	CFU/ml	Average CFU/ml	Volume Recovered from Biosamplers (ml)	CFU/m ³	Average CFU/m ³	Percent Reduction Compared to Time Zero	Log ₁₀ Reduction Compared to Time Zero ¹
<i>S. Aureus</i> ATCC 6538	Airbox Peak-S	N/A	Inoculum 1	2.15E+07	2.15E+07	N/A	N/A	N/A	N/A	N/A
		Time Zero	Replicate 1	1.75E+05	1.75E+05	22	3.08E+07	3.08E+07	N/A	N/A
		10 Minute	Replicate 1	2.50E+01	2.50E+01	22.6	4.52E+03	4.52E+03	99.985%	3.83
		25 Minute	Replicate 1	5.00E+00	5.00E+00	22.4	8.96E+02	8.96E+02	99.997%	4.54
		40 Minute	Replicate 1	5.00E-01	5.00E-01	21.6	8.64E+01	8.64E+01	99.9997%	5.55
		60 Minute	Replicate 1	5.00E-01	5.00E-01	21.6	8.64E+01	8.64E+01	99.9997%	5.55

¹The Log reductions for the Test Runs are adjusted to account for natural die-off and gravitational settling observed in the Control Run.

Test Microorganism	Test Device	Treatment Time Point	Replicate	CFU/ml	Average CFU/ml	Volume Recovered from Biosamplers (ml)	CFU/m ³	Average CFU/m ³	Percent Reduction Compared to Time Zero	Log ₁₀ Reduction Compared to Time Zero ¹
<i>B. subtilis</i> ATCC 19659	Airbox Peak-S	N/A	Inoculum 1	5.00E+08	5.00E+08	N/A	N/A	N/A	N/A	N/A
		Time Zero	Replicate 1	2.40E+05	2.40E+05	22	4.22E+07	4.22E+07	N/A	N/A
		10 Minute	Replicate 1	2.10E+03	2.10E+03	22.6	3.80E+05	3.80E+05	99.10%	2.05
		25 Minute	Replicate 1	5.00E-01	5.00E-01	22.4	8.96E+01	8.96E+01	99.9998%	5.67
		40 Minute	Replicate 1	5.00E-01	5.00E-01	21.6	8.64E+01	8.64E+01	99.9998%	5.69
		60 Minute	Replicate 1	5.00E-01	5.00E-01	21.6	8.64E+01	8.64E+01	99.9998%	5.69

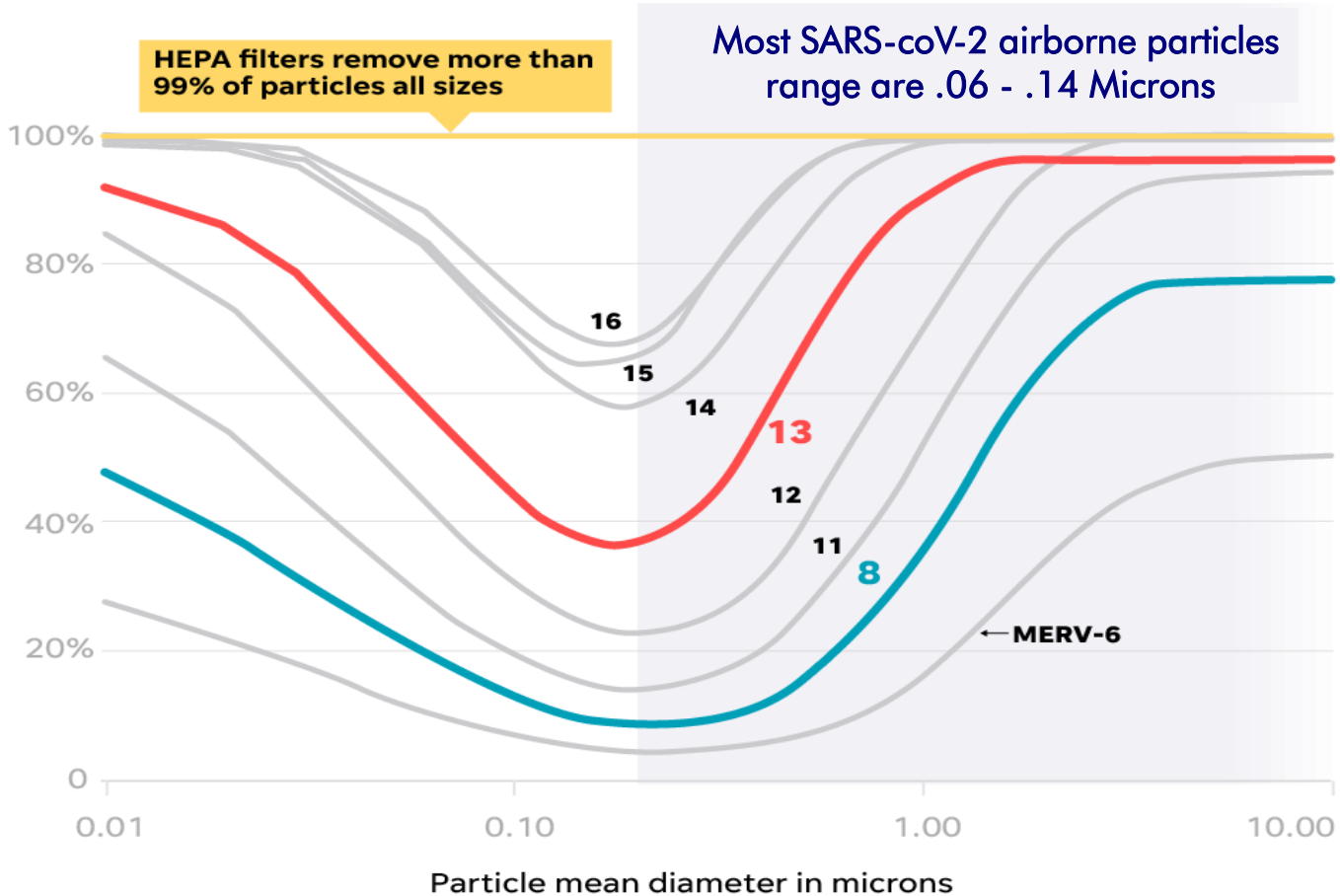
¹The Log reductions for the Test Runs are adjusted to account for natural die-off and gravitational settling observed in the Control Run.

Test Microorganism	Test Device	Treatment Time Point	Replicate	CFU/ml	Average CFU/ml	Volume Recovered from Biosamplers (ml)	CFU/m ³	Average CFU/m ³	Percent Reduction Compared to Time Zero	Log ₁₀ Reduction Compared to Time Zero ¹
<i>MS2 Bacteriophage</i> ATCC 15597-B1	Airbox Peak-S	N/A	Inoculum 1	6.90E+09	6.90E+09	N/A	N/A	N/A	N/A	N/A
		Time Zero	Replicate 1	7.60E+06	7.60E+06	22	1.34E+09	1.34E+09	N/A	N/A
		10 Minute	Replicate 1	3.20E+04	3.20E+04	22.6	5.79E+06	5.79E+06	99.57%	2.36
		25 Minute	Replicate 1	1.90E+02	1.90E+02	22.4	3.40E+04	3.40E+04	99.997%	4.59
		40 Minute	Replicate 1	5.00E-01	5.00E-01	21.6	8.64E+01	8.64E+01	99.99994%	7.19
		60 Minute	Replicate 1	5.00E-01	5.00E-01	21.6	8.64E+01	8.64E+01	99.99994%	7.19

¹The Log reductions for the Test Runs are adjusted to account for natural die-off and gravitational settling observed in the Control Run.



CERTIFIED HEPA filters out 99.99% particles of ALL SIZES

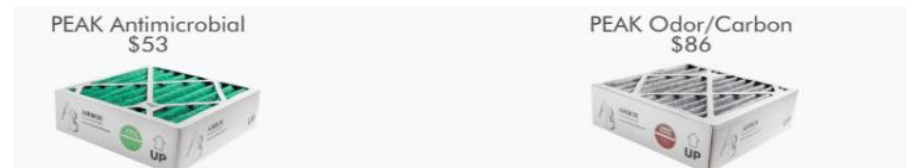


Peak Series-S

Dimensions



- **Height:** 27 Inches
- **Length:** 13 Inches
- **Width:** 13 Inches
- **Weight:** 44 Pounds
- **CFM:** 425
- **Noise Levels:** 34-72 Decibels
- **Sq Footage Filtration:** 1000 Square Feet
- **Plugs into any 120v outlet**



Apex Series-S

Dimensions



- **Height:** 47 Inches
- **Length:** 23 Inches
- **Width:** 18 Inches
- **Weight:** 70 Pounds
- **CFM:** 880
- **Noise Levels:** 54-59 Decibels
- **Sq Footage Filtration:** 3000 Square Feet
- **Plugs into any 120v outlet**

APEX Antimicrobial
\$75

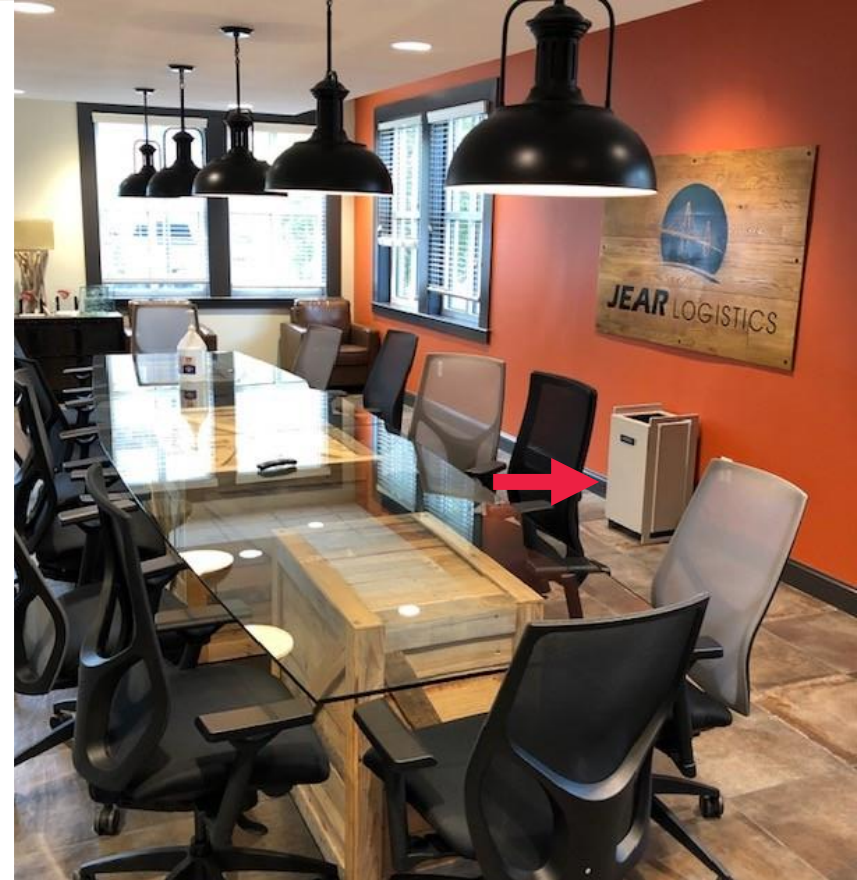


APEX Odor/Carbon
\$74



Note about APEX

With proper maintenance and replacement of pre filters (every 4-6 months based on environment), HEPA filter can last the lifetime of the unit (in excess 5 years)



CERTIFIED HEPA TECHNOLOGY

Customize Options for Branding & Appearance





THE

SAFE AIR

ZONE 

CUSTOMIZE OPTIONS FOR BRANDING & APPEARANCE



26+ years of clean room technology experience
based in the United States



PEAK 5 years fan/motor and lifetime
materials and craftsmanship, APEX 5
years all inclusive



www.thesafeairzone.com